

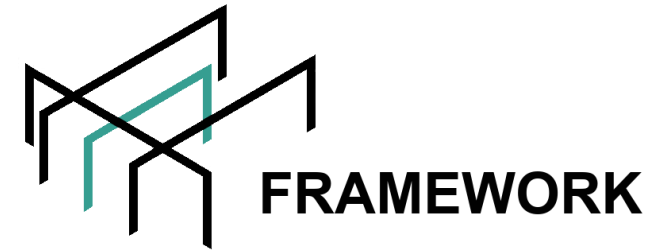
FRAMEWORK

STRUCTURAL STEEL DESIGNERS



**SPORTOWA 4A / 9 STREET
05-600 GRÓJEC, POLAND
NIP: 797 20 80 355**

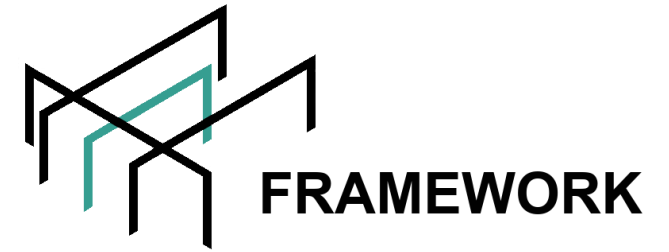
WWW.FRAMEWORK.COM.PL



WE ARE DESIGNING

STEEL STRUCTURES FOR THE INDUSTRY

AUTOMOTIVE
CHEMICAL
METALLURGICAL
METAL
ENERGETIC
CEMENT-LIME
ENVIRONMENTAL PROTECTION



THE TYPES OF STEEL STRUCTURES

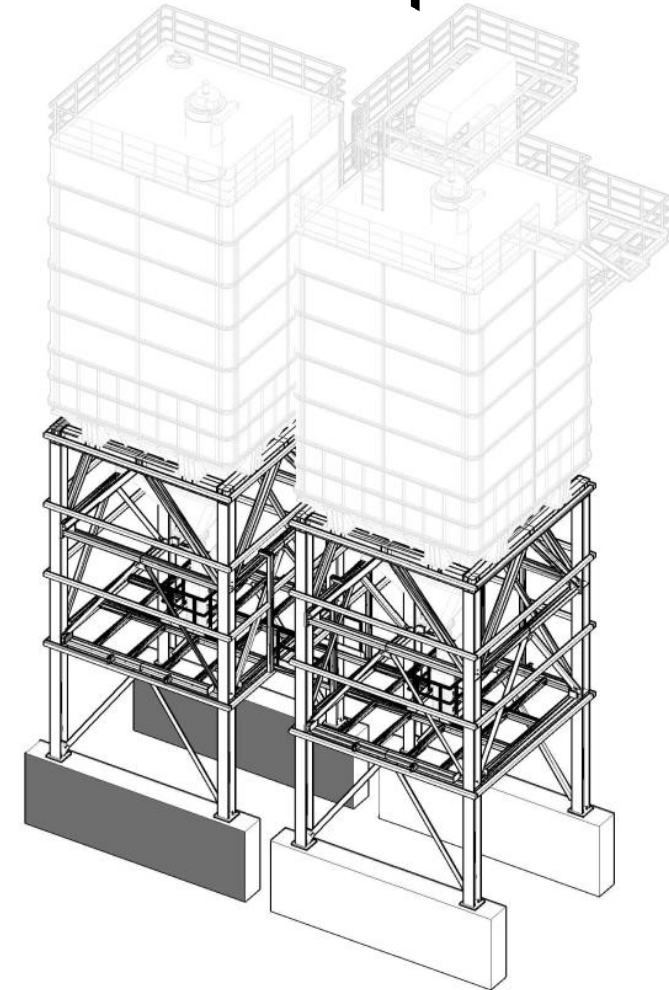
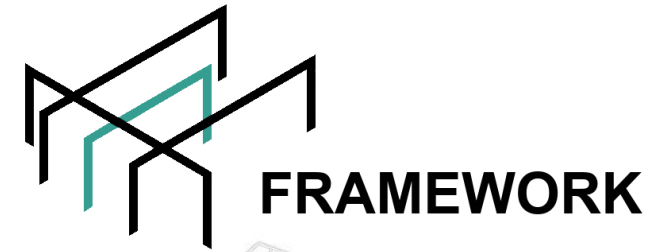
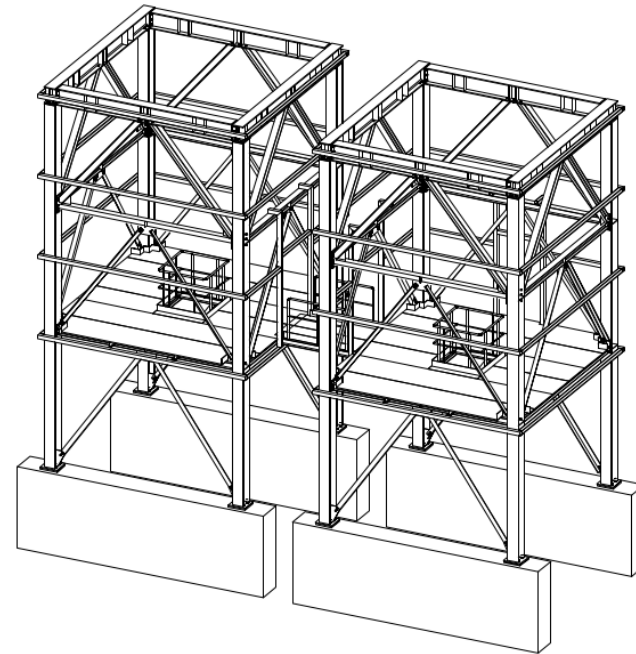
- **SUPPORT STRUCTURES OF PRODUCTION LINES (TECHNOLOGICAL PLATFORMS)**
- **PIPERACKS PLATFORM**
- **STEELWORK FOR PAINT SHOP**
- **STEELWORK FOR FINAL ASSEMBLY**
- **CRANE TRACKS**
- **CONVEYORS PLATFORMS**
- **HIGH BAY STORAGE WAREHOUSE**
- **CURTAIN WALLS**
- **SUBSTRUCTURE OF MACHINES AND EQUIPMENT**
- **BUILDING ELEMENTS ADAPTED TO PRODUCTION LINES**

**WE CARRY OUT PROJECTS FOR STRUCTURES LOCATED IN SEISMIC AREAS
(USA, CHINA, SOUTH AFRICA, MEXICO, TURKEY, UAE, EU).**



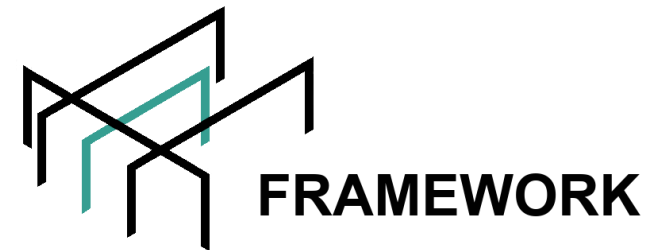
OUR DESIGN REALIZATIONS

CUSTOMER: CEMENT PLANT
LOCATION: SITKÓWKA, POLAND
PHASE PROJECT: BASIC AND DETAIL DESIGN
MAIN MATERIAL: STEEL GALVANIZED
TOTAL WEIGHT: 33 000 KG – (WITHOUT SILO)

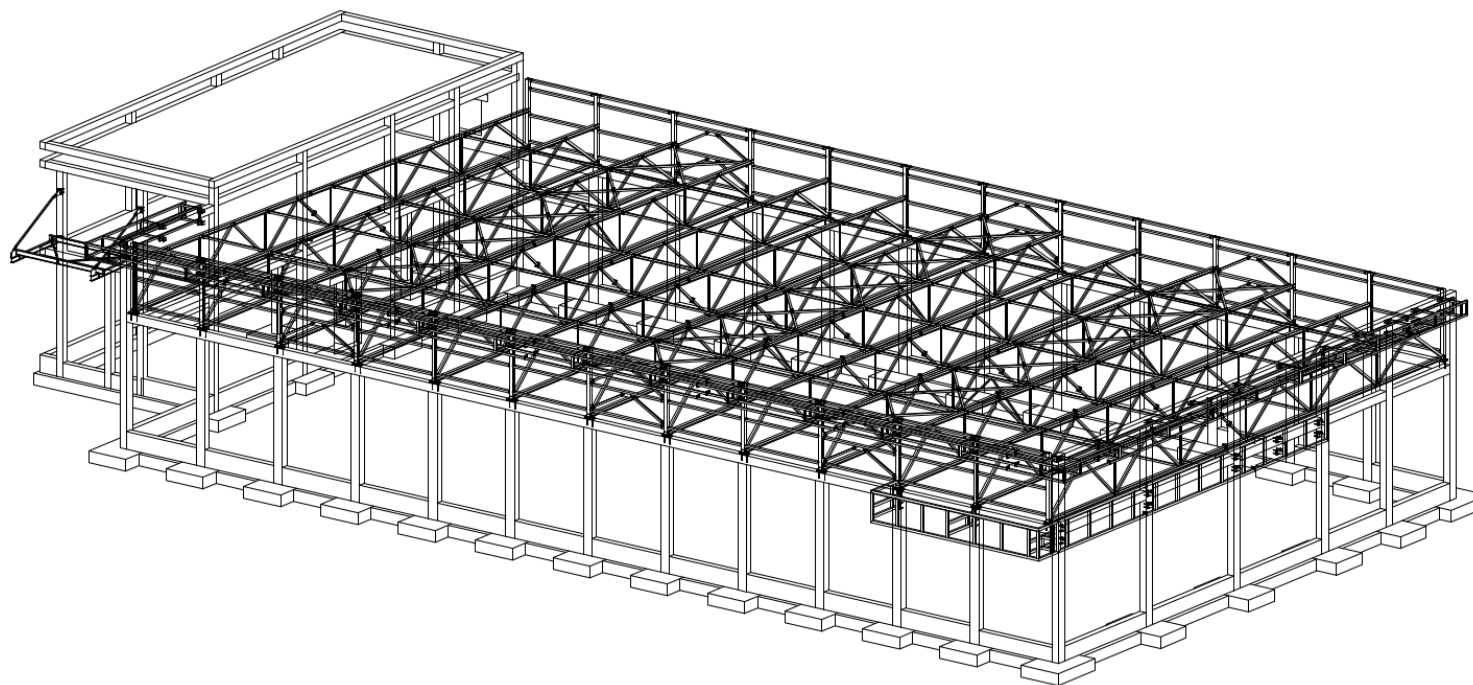




OUR DESIGN REALIZATIONS



CUSTOMER: COMMERCIAL SECTOR
LOCATION: ZIELONKA, POLAND
PHASE PROJECT: BASIC AND DETAIL DESIGN
MAIN MATERIAL: STEEL GALVANIZED AND CONCRETE
TOTAL AREA: 1 200 M2





OUR DESIGN REALIZATIONS

CUSTOMER: PHARMA INDUSTRY
LOCATION: NIEPOŁOMICE, POLAND
PHASE PROJECT: BASIC AND DETAIL DESIGN
MAIN MATERIAL: STEEL GALVANIZED, COVER PLATE AND GRIDS
TOTAL WEIGHT: 7 300 KG – AHU PLATFORM

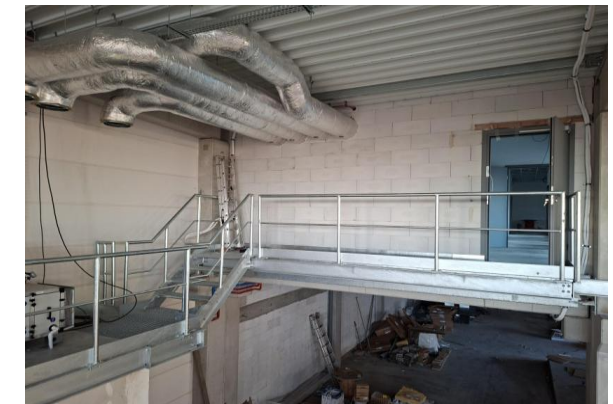
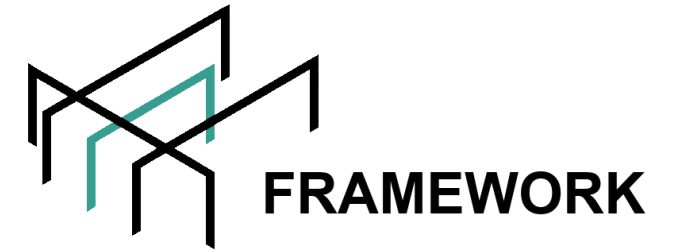
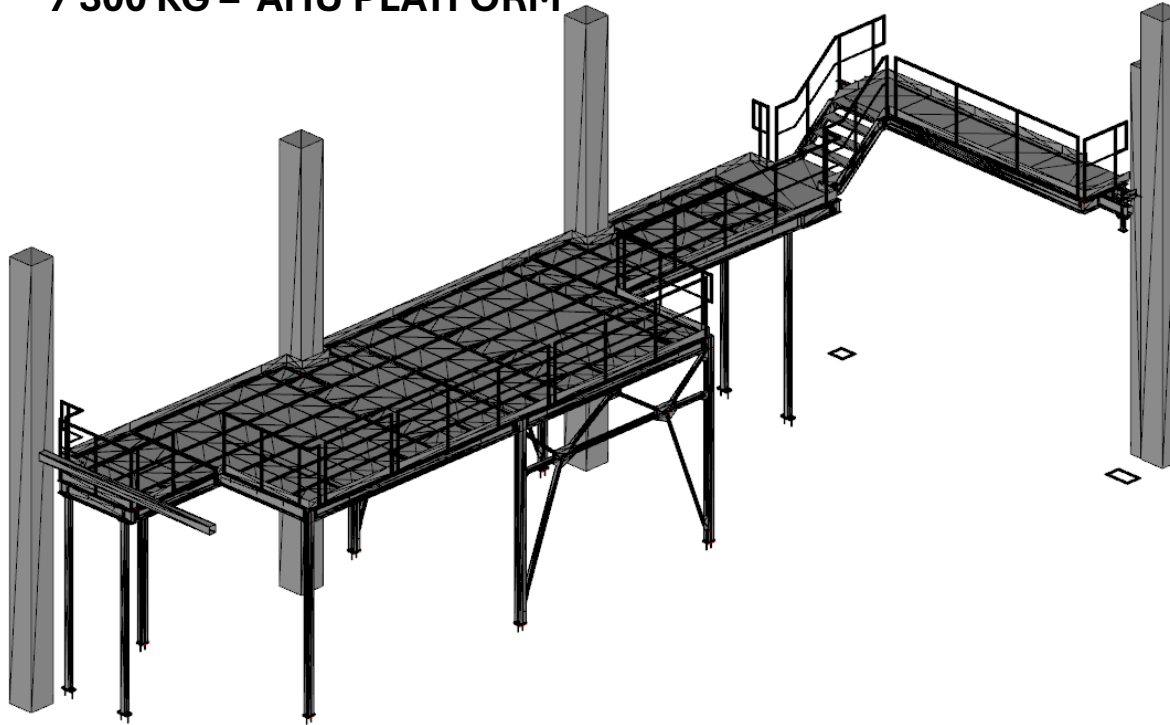
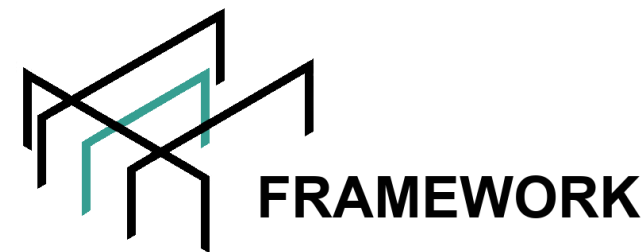


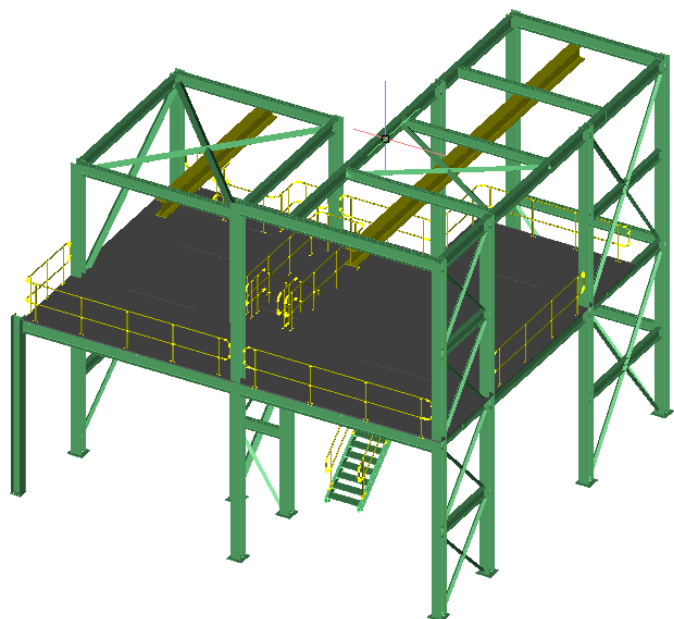
PHOTO FROM THE REALIZATION
(ZERO MISTAKES DURING
MANUFACTURING AND ASSEMBLY)



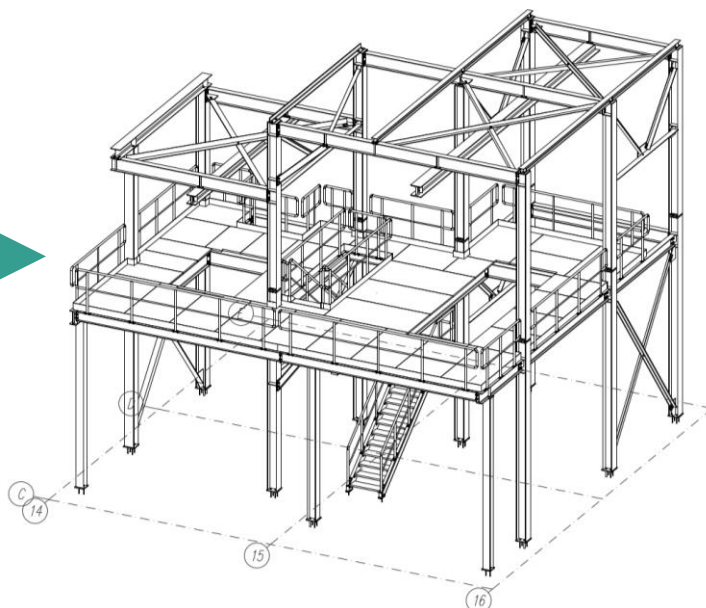
OUR DESIGN REALIZATIONS



CUSTOMER: METALLURGY INDUSTRY - PGM
LOCATION: ZAWIERCIE, POLAND
PHASE PROJECT: BASIC AND DETAIL DESIGN
MAIN MATERIAL: STEEL, COVER GRIDS BY GRP (GLASS REINFORCED PLASTIC)
TOTAL WEIGHT: 23 800 KG – PLATFORM WITH TWO CRANE TRACKS



FIRST CONCEPT OF STEEL STRUCTURE FROM CLIENT
28 500 KG BEFORE OPTIMIZATION OF STATIC MODEL



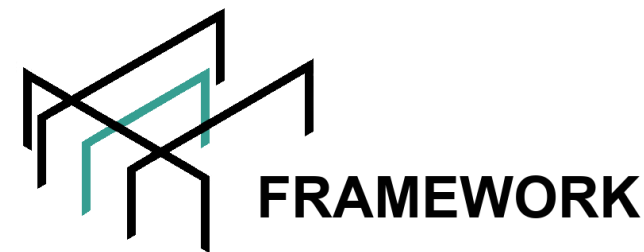
THE FINAL MODEL OF STEEL STRUCTURES
23 800 KG AFTER THE OPTIMIZATION OF STATIC MODEL



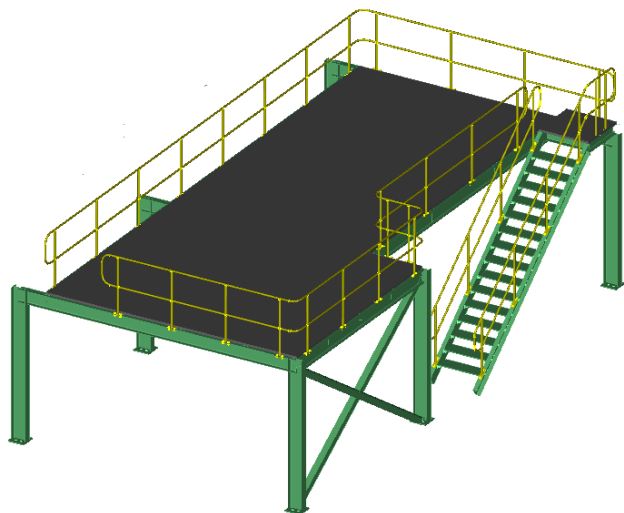
PHOTO FROM THE REALIZATION
(ZERO MISTAKES DURING
MANUFACTURING AND ASSEMBLY)



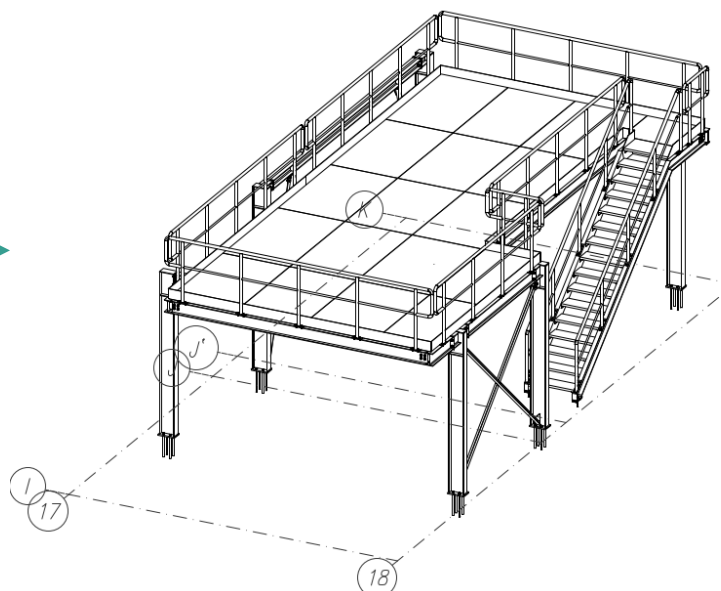
OUR DESIGN REALIZATIONS



CUSTOMER: METALLURGY INDUSTRY - PGM
LOCATION: ZAWIERCIE, POLAND
PHASE PROJECT: BASIC AND DETAIL DESIGN
MAIN MATERIAL: STEEL, COVER GRIDS BY GRP (GLASS REINFORCED PLASTIC)
TOTAL WEIGHT: 5 400 KG – MAINTENANCE PLATFORM



FIRST CONCEPT OF STEEL STRUCTURE FROM CLIENT
6 160 KG TOTAL WEIGHT
BEFORE OPTIMIZATION OF STATIC MODEL



THE FINAL MODEL OF STEEL STRUCTURES
5 400 KG AFERT THE OPTIMIZATION STATIC MODEL

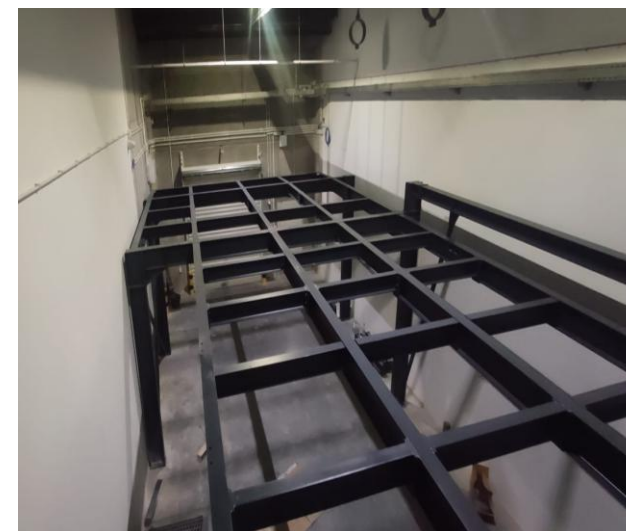
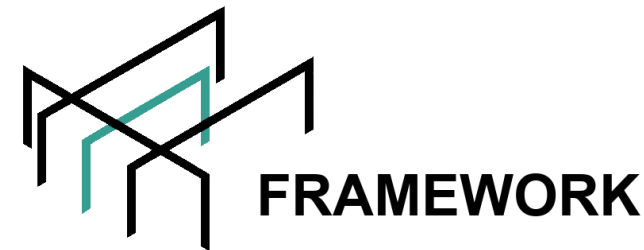
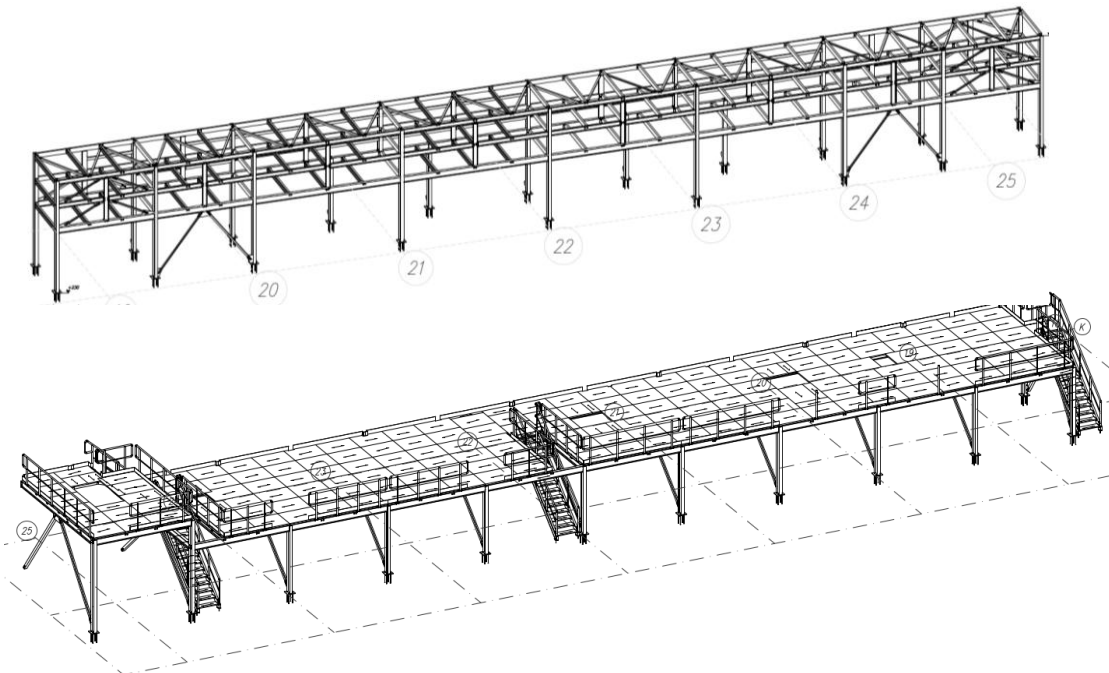


PHOTO FROM THE REALIZATION
(ZERO MISTAKES DURING
MANUFACTURING AND ASSEMBLY)

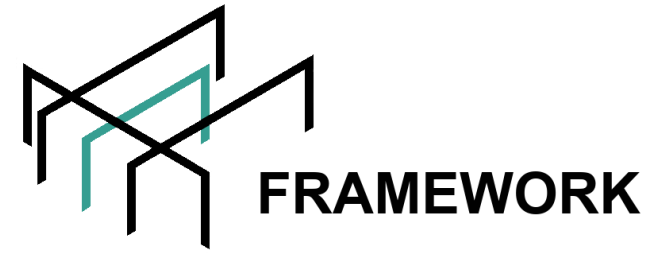


OUR DESIGN REALIZATIONS

CUSTOMER: METALLURGY INDUSTRY - PGM
LOCATION: ZAWIERCIE, POLAND
PHASE PROJECT: DETAIL DESIGN
MAIN MATERIAL: STEEL HOT ROLLED PROFILE, STEEL COVER GRATING
TOTAL WEIGHT: 17 350 KG – PIPE RACK
26 100 KG – MAINTENANCE PLATFORM



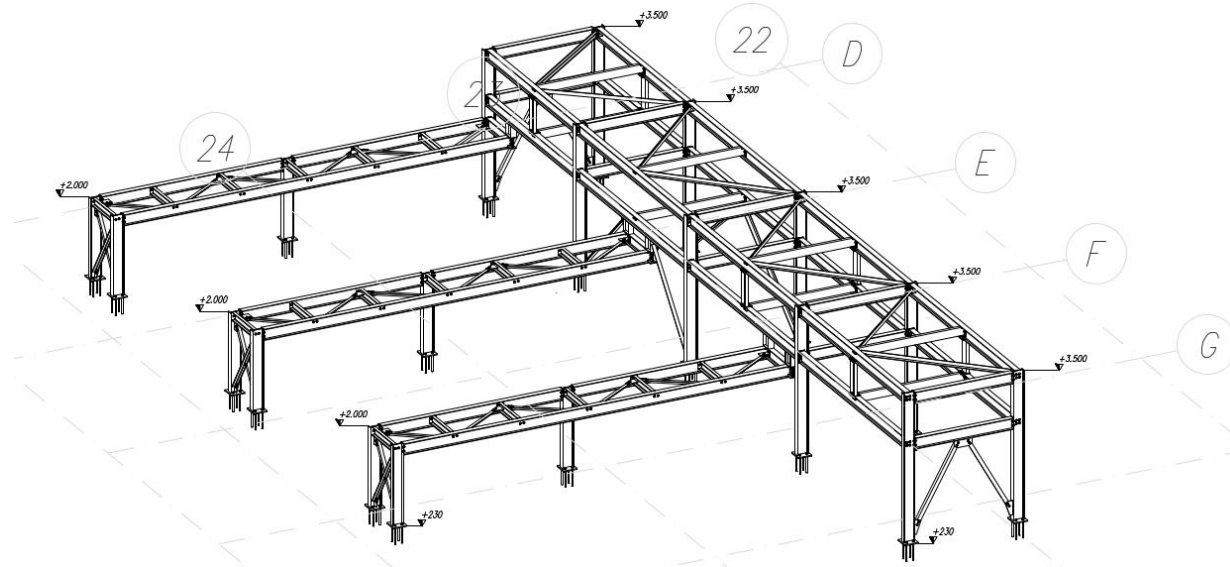
**PHOTO FROM THE REALIZATION
(ZERO MISTAKES DURING MANUFACTURING AND ASSEMBLY)**

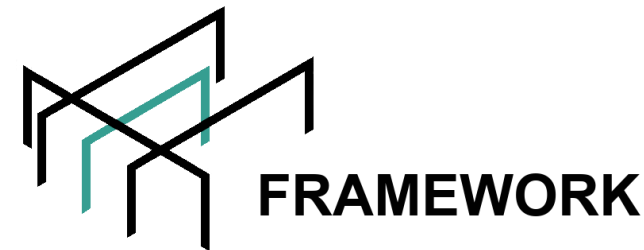


OUR DESIGN REALIZATIONS

CUSTOMER: METALLURGY INDUSTRY - PGM
LOCATION: ZAWIERCIE, POLAND
PHASE PROJECT: DETAIL DESIGN
MAIN MATERIAL: STEEL HOT ROLLED PROFILE
TOTAL WEIGHT: 8 830 KG - SUPPORT STRUCTURES FOR PIPELINES

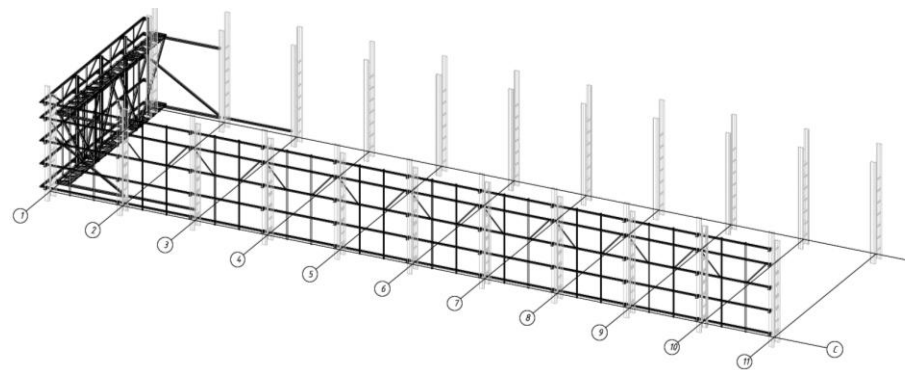
ZERO MISTAKES DURING MANUFACTURING AND ASSEMBLY





OUR DESIGN REALIZATIONS

CUSTOMER: SMELTER PLANT
LOCATION: OSTROWIEC ŚWIĘTOKRZYSKI, POLAND
PHASE PROJECT: CHECKING THE EXISTING STRUCTURE AND DESIGNING A NEW PART OF THE CURTAIN WALL
MAIN MATERIAL: STEEL HOT ROLLED PROFILE
TOTAL WEIGHT: 16 000 KG - NEW PART OF THE CURTAIN WALL



BASIC AND DETAIL MODEL

STATIC MODEL

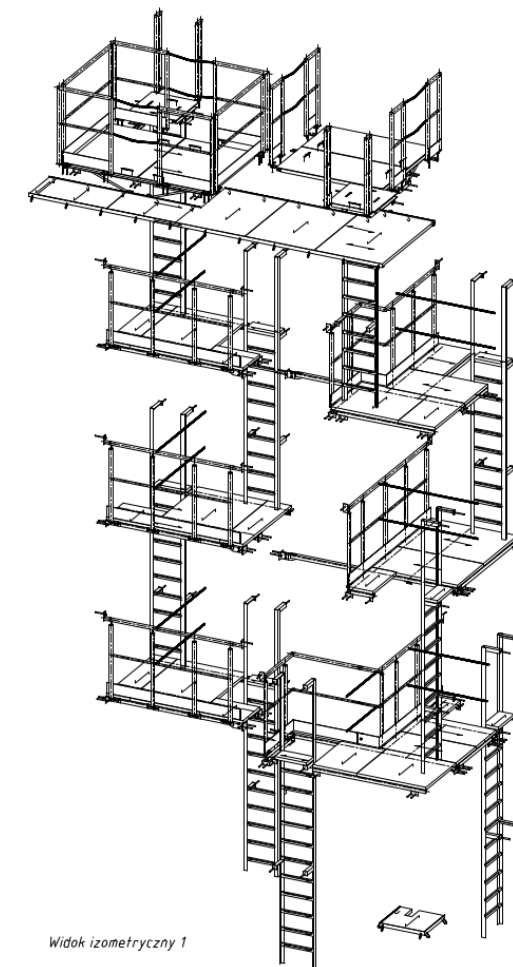
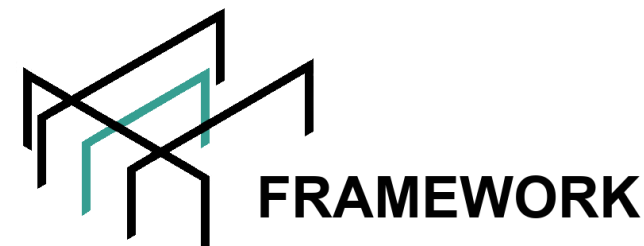


PHOTO FROM THE REALIZATION



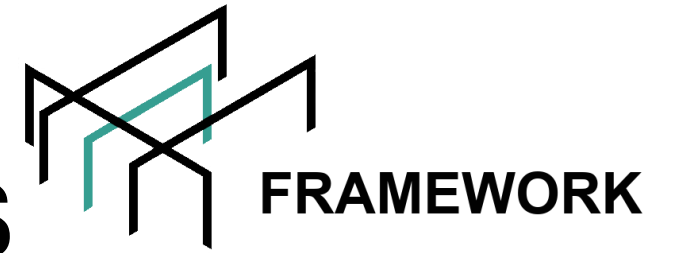
OUR DESIGN REALIZATIONS

CUSTOMER: ENVIRONMENTAL PROTECTION INDUSTRY
LOCATION: POLAND
PHASE PROJECT: BASIC AND DETAIL DESIGN
MAIN MATERIAL: STEEL HOT ROLLED PROFILE, STEEL COVER GRIDS
TOTAL WEIGHT: 2 220 KG – TECHNOLOGICAL PLATFORM FOR PUMPING STATION

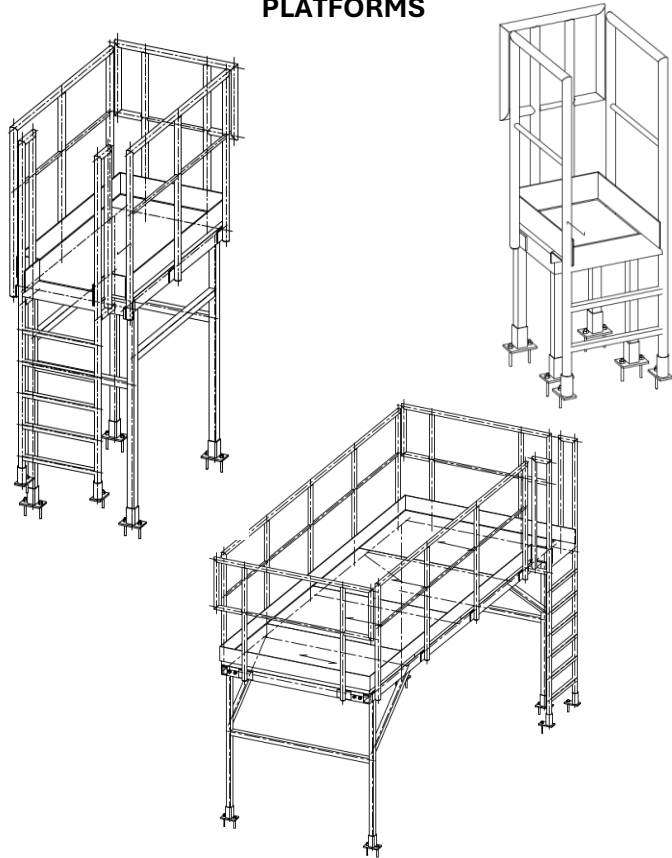




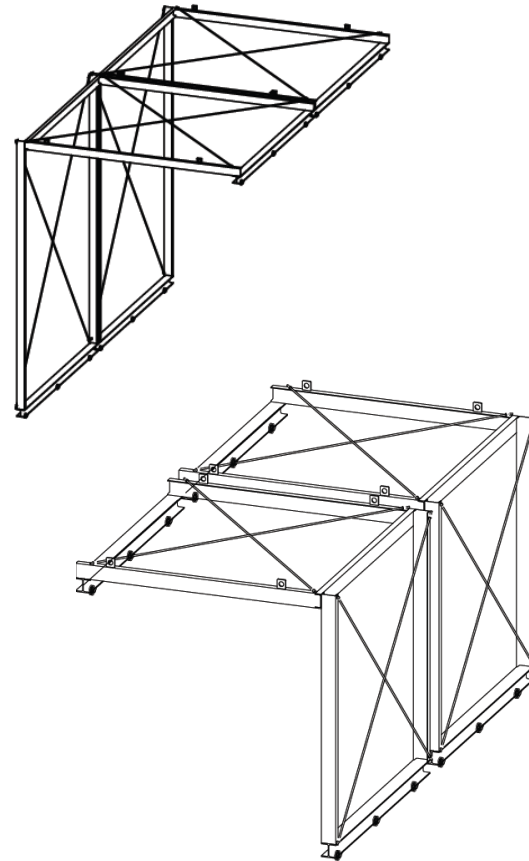
OTHERS BASIC&DETAIL DESIGNS



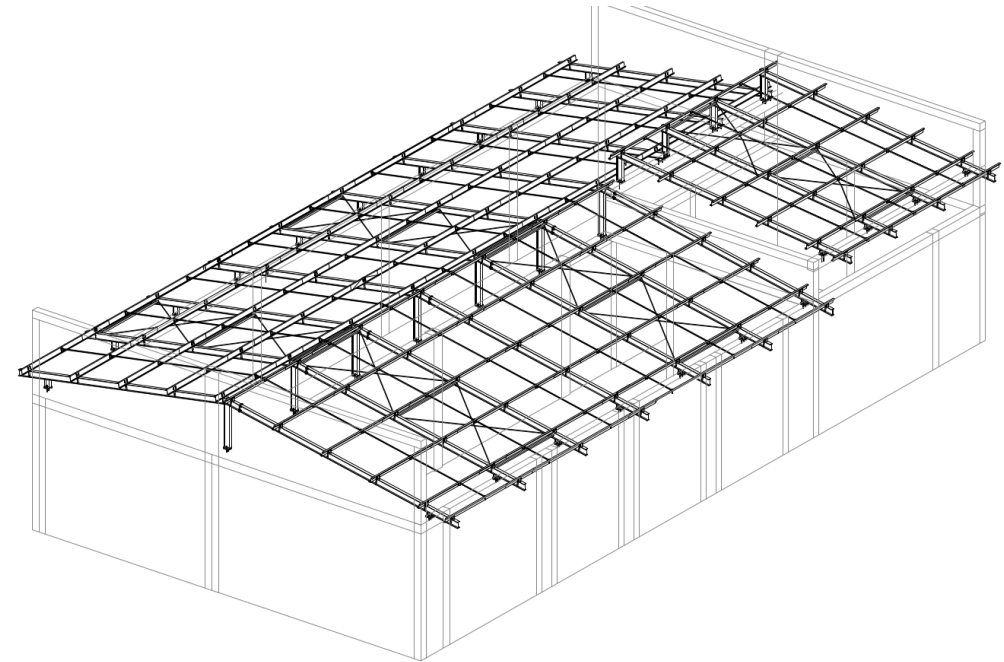
TECHNOLOGICAL
PLATFORMS



CURTAIN ACUSTIC WALLS

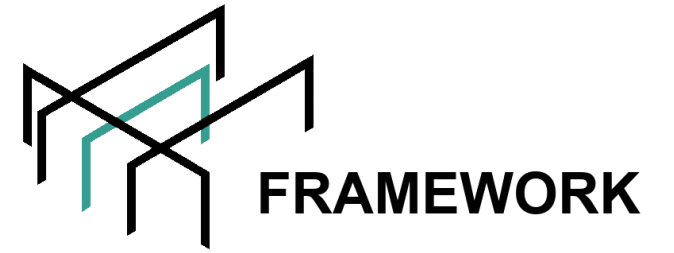


STEEL ROOFS

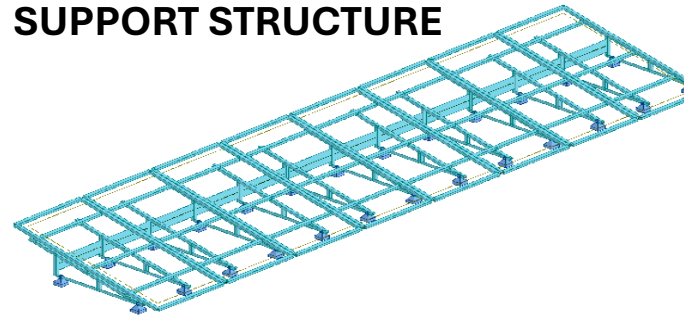




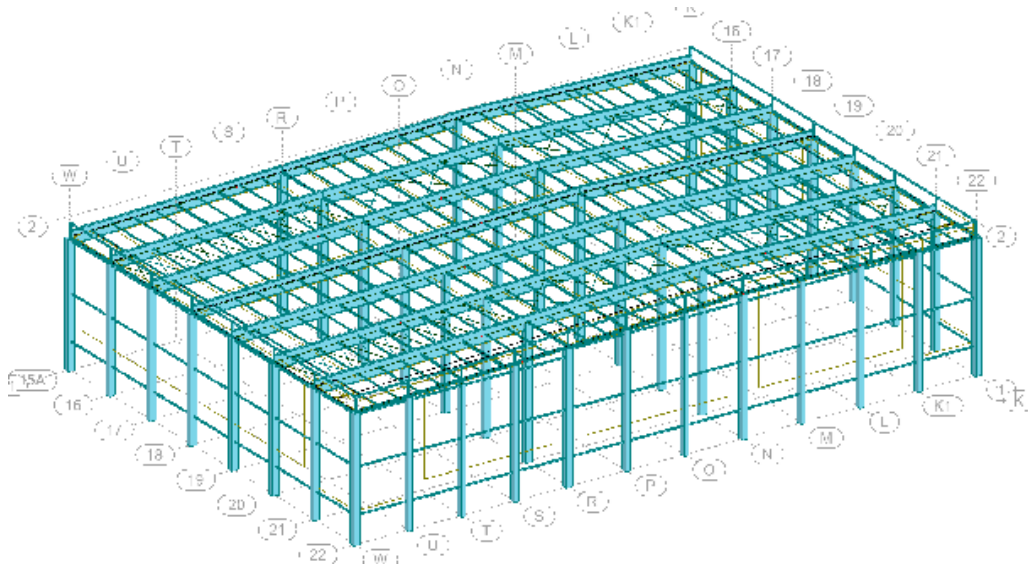
STATIC VERIFICATION OF CONSTRUCTIONS



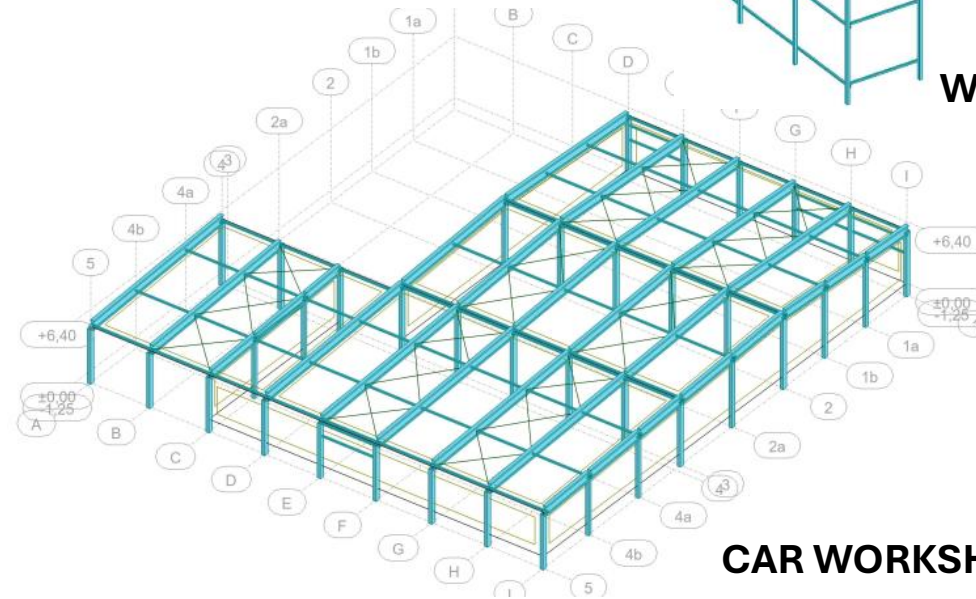
PHOTOVOLTAICS
SUPPORT STRUCTURE



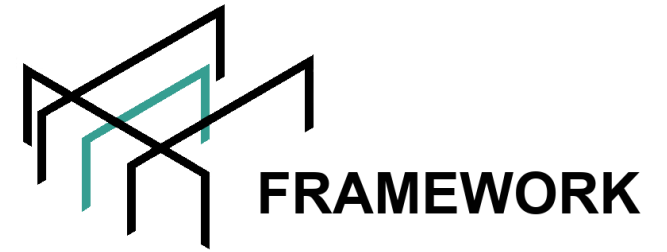
WASTE SHELTERS



**BUILDING EXPANSION OF MANUFACTURING PLANT
POULTRY INDUSTRY**



CAR WORKSHOP

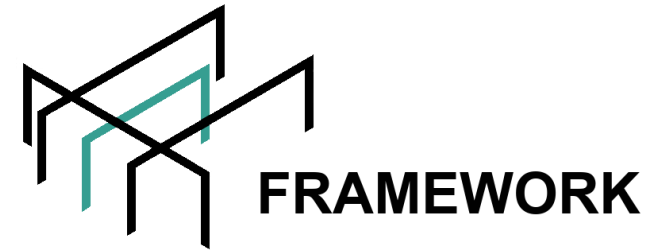


OUR EXPERIENCE

9 YEARS EXPERIENCE IN DESIGN STEELWORK STRUCTURE FOR AUTOMOTIVE INDUSTRY AND ANOTHER CUSTOMERS

4 YEARS EXPERIENCE IN DESIGN BUILDING STRUCTURES

PROFFESIONAL CIVIL ENGINEERING IN POLAND
(POLISH CONSTRUCTION LICENSE ENTITLED TO THE DESIGN AND EXECUTION
STRUCTURES REQUIRING A BUILDING PERMIT)



SOFTWARE

STATIC CALCULATIONS:

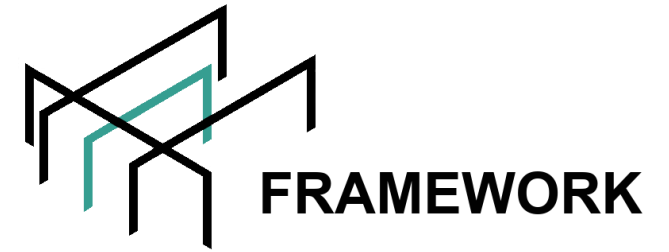
- ROBOT STRUCTURAL ANALYSIS
- IDEA STATICA

BASIC AND DETAIL DESIGN:

- TEKLA STRUCTURES
- PROSTEEL

BIM COORDINATION:

- NAVISWORKS MANAGE
- AUTODESK RECAP



DESIGN CODES

CHINESE CODES:

- GB500XX SERIES
- SEISMIC DESIGN GB50011

US CODES:

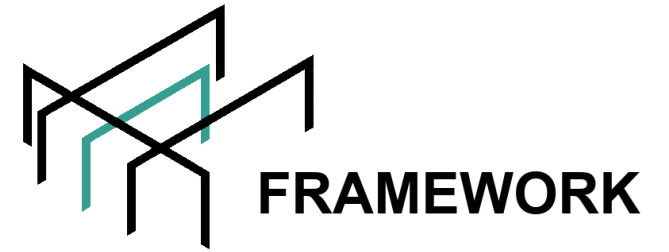
- AISC 360
- ASCE 7
- REFERENCE DESIGN GUIDE
- SEISMIC DESIGN ASCE 7 UNDER CONSIDERATION OF ASCE 341 AND OTHER

EU CODE:

- EUROCODES 1990...1999
- SEISMIC DESIGN EC8

BS CODE:

- BS EN 1993
- SEISMIC BS EN 1998 – EC8



ADDRESS:

**UL. SPORTOWA 4A / 9
05-600 GRÓJEC, POLAND**

TAX IDENTIFICATION NUMBER:

797 20 80 355

WEBSITE:

WWW.FRAMEWORK.COM.PL

REQUEST FOR PROPOSAL:

HONORATA WIECZOREK - INDUSTRY SECTOR



+ 48 537 970 499



HWIECZOREK@FRAMEWORK.COM.PL

PAWEŁ WIECZOREK - COMMERCIAL SECTOR



+ 48 576 210 663



PWIECZOREK@FRAMEWORK.COM.PL